



Volkswagen

Hello Fuel Included,

# Meet your new New e-Golf

New e-Golf BEV 136ps 5 door Direct Drive Blue-e-Motion

<http://vw.co.uk/s/22jq3>



Share your new cars on



Your

# New e-Golf

This is your personalised brochure for your New Golf choices. It comes complete with your specifications and features configured with us today. Feel free to get in touch anytime if you have any questions.

---

**Total**

**£32,190**

---



## Changed your mind?

That's an easy change to make, whether you fancy another colour or decide to add that optional extra you wanted. Our configuration code links to each car in our online website configurator so you can make as many changes as you need.

Your

# Specifications

---

## Engine & transmission

Fuel type	Battery Electric Vehicle
Engine capacity	litre 136ps
Wheel drive	2wd
BlueMotion	YES
Transmission	Direct Drive

## Emissions

CO2 emissions	TBAg/km <sup>^</sup>
CO2 emissions class	EURO 6
AdBlue <sup>†</sup>	NO

## Performance

Acceleration (0 - 62mph)	9.6 secs
Maximum speed	93mph
Maximum power	136ps at 3000rpm
Maximum torque	214lbs.ft at 3000rpm

## Dimensions

Number of doors	5
Style	Hatchback
Length	4258mm
Width	1799mm
Height	1492mm

## Tax and insurance

Insurance group	26
VED	£0

## Fuel economy

Urban	TBA mpg*
Extra urban	TBA mpg*
Combined	TBA mpg*

<sup>†</sup> Some Volkswagen diesel engines are AdBlue. AdBlue is a water / urea based additive that cleans exhaust gases to comply with EU6 exhaust emissions regulations. AdBlue will need to be topped up but frequency will be dependent on mileage and driving style. AdBlue top-ups at authorised repairers are extremely competitive and charge by the litre so you only pay for what you need.

The specifications contained in this brochure are for information purposes only and are subject to change.

Your

# Standard features

---

## Overview

Base price £32,190

## Key features

Car-Net App-Connect

Convenience pack

Darkened rear LED lights with sweeping indicator function

Discover Pro DVD nav/ radio system (DNS PRO) with Gesture Control

Driver profile selection

Front assist including Adaptive Cruise Control (ACC)

LED headlights, range adjustable

Mirror pack - Remote electrically foldable door mirrors with kerb view

Parking sensors, front and rear

---

Your

# Standard features

---

## All features

---

### Service

12-year body protection warranty  
3-year paintwork warranty  
3-year/60,000 mile warranty (whichever is soonest)  
Volkswagen Roadside Assistance

---

### Wheels and Suspension

Alloy wheels, 'Tillevé'

---

### Exterior

Urano Grey  
Body coloured bumpers  
Body coloured door handles  
Body coloured door mirrors with integrated indicators  
Galvanised body  
Rear screen wash/wipe with intermittent wipe  
Rear window aerial  
Darkened rear LED lights with sweeping indicator function  
High level third brake light  
LED headlights, range adjustable  
Rear lights incorporating LED technology  
Black front air intake and radiator grille with chrome trimmed inserts  
Body coloured door mirrors with integrated indicators

---

### Interior

Instrument lighting - white adjustable panel illumination  
Leather trimmed three-spoke multifunction steering wheel  
Remote central locking  
Bag hook in luggage compartment  
Grab handles

Heated rear windscreen  
Load lashing points in luggage compartment x 4  
Load-through provision  
Luggage compartment cover, stowable  
Luggage compartment light  
12v socket in luggage compartment  
Cup holders, front x 2  
Drawer under front passenger's seat  
Front seat back storage pockets  
Glovebox - illuminated, cooled  
Storage compartments in front and rear doors  
Chrome plated light switch surround  
Decorative inserts 'Dark Silver' in dash and door panels  
Black 'Zoom' cloth  
Electric windows, rear (5-door only)  
Height and reach adjustable steering wheel

---

### In Car Entertainment and Communication

Car-Net App-Connect  
Discover Pro DVD nav/radio system (DNS PRO) with Gesture Control  
Voice activation

---

### Safety and Security

Driver's and front passenger's whiplash-optimised head restraints  
Driver's and front passenger's airbags  
ABS (Anti-lock Braking System)  
Child security lock on rear doors  
Curtain airbag system  
Disc brakes, front and rear, front ventilated (not 1.0 TSI)  
Driver alert system

Your

# Standard features (cont)

---

Driver's knee airbag

Electronic engine immobiliser

ESC (Electronic Stability Control), including ASR and EDL

Front and rear side impact airbags

Height adjustable front three-point seat belts with tensioners

Pre-crash preventive occupant protection

Alarm with interior protection

Isofix child seat preparation for two rear child seats

Automatic Post-Collision Braking System

Brake pad wear indicator

Tyre pressure monitoring system, electronic

---

## Comfort and Convenience

---

2Zone electronic air conditioning

Driver's and front passenger's seat height adjustment

Dust and pollen filter

Front centre armrest

Front comfort seats with height and lumbar adjustment

Split folding rear seat backrest 60/40

Interior light delay

Reading lights, front x 2, rear x 2

Electrically heated and adjustable door mirrors

Mirror pack - Remote electrically foldable door mirrors with kerb view

Reflectors in all doors

Convenience pack

Your

# Standard technologies

Here are some of the clever technologies that are standard in your configuration. Find out more by following the links where available.



## ♥ Adaptive Cruise Control (ACC)

1

Adaptive Cruise Control keeps your car at a safe distance from the vehicle in front.

<https://youtu.be/uJmYVrEFIFQ>



## ♥ Auto Hold

1

An extension of our electronic parking brake system that stops your car accidentally rolling back if you stop on a hill.

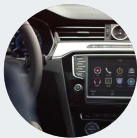
[https://youtu.be/PjrPK7ECD\\_0](https://youtu.be/PjrPK7ECD_0)



## BlueMotion Technologies

1

Lower emissions, greater economy.



## ♥ Car-Net

1

Car-Net refers to everything related to in-car internet connectivity in Volkswagen vehicles.

<https://youtu.be/NdqxvPxsOgQ>



## ♥ Car-Net

1

Car-Net refers to everything related to in-car internet connectivity in Volkswagen vehicles.

<https://youtu.be/NdqxvPxsOgQ>



## ♥ Chilled Glove Box

1

Celebrate year-round picnicking with our neat storage solutions and chilled glove box.

<https://youtu.be/dmlbI5oNPhc>

1

**New e-Golf BEV 136ps 5 door**  
Direct Drive Blue-e-Motion

Your

# Standard technologies (cont)

Here are some of the clever technologies that are standard in your configuration. Find out more by following the links where available.



## ♥ City Emergency Braking

1

The City Emergency Braking system is an innovative safety technology.

<https://youtu.be/SITCsd56bXM>



## ♥ Climate control

1

Fully automatic two-zone climate control lets you set different temperatures for the driver and front passenger areas of your car.

<https://youtu.be/rfxdHWkmeCE>

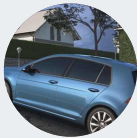


## Driver Alert System

1

Our new Driver Alert System gives early warning of when you need to take a break on long and tiring journeys, making motorway driving safer.

<https://youtu.be/WqR3YbjxyS0>



## ♥ Electronic Parking Brake

1

Lets you park quickly and easily - at the touch of a button.

<https://youtu.be/lhvaZ-pSWDI>

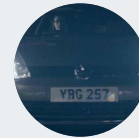


## ♥ ESC

1

Our advanced Electronic Stability Control detects critical situations to stop skidding before it begins.

<https://youtu.be/jpGLRf2NU3w>



## ♥ Home Safe Lights

1

The 'coming home' and 'leaving home' functions are designed to improve your convenience and comfort.

<https://youtu.be/5VsJEJAZwGE>

1

**New e-Golf BEV 136ps 5 door**  
Direct Drive Blue-e-Motion



Your

# Standard technologies (cont)

Here are some of the clever technologies that are standard in your configuration. Find out more by following the links where available.

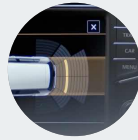


## ♥ Isofix child seat fixings

1

Your child's safety is a priority - for us, as well as for you. That's why we use Isofix child seat fixings in all our cars.

<https://youtu.be/TBSd5NL07LU>



## ♥ Parking Sensors

1

Parking sensors make reversing into tricky spaces easier and help prevent minor damage to your car.

[https://youtu.be/kxsuv\\_t5XIY](https://youtu.be/kxsuv_t5XIY)



## ♥ Rain Sensor

1

The rain sensors automatically regulate the frequency of your windscreen wipers, according to how heavily it is raining.

[https://youtu.be/ZamXRhwe\\_lk](https://youtu.be/ZamXRhwe_lk)



## ♥ Start/Stop Technology

1

We think that sitting in traffic is bad enough without knowing that you have to pay for it too. That's why we created Start/Stop Technology, a really simple way of helping you to save money whenever you come to a stop.

<https://youtu.be/xHOvyQu57cc>

1

**New e-Golf BEV 136ps 5 door**  
Direct Drive Blue-e-Motion

Your

# Exterior choices

## New e-Golf

BEV 136ps 5 door Direct Drive Blue-e-Motion



Urano Grey

Standard



## Alloy wheels, 'Tillevé'

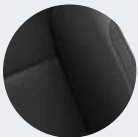
Four 6.5J x 16 'Tillevé' with 205/55 R16 tyres and anti-theft wheel bolts  
Standard

Your

# Interior choices

## New e-Golf

BEV 136ps 5 door Direct Drive Blue-e-Motion



Black 'Zoom' cloth

Black 'Zoom' cloth

Standard



## Discover Pro DVD nav/radio system (DNS PRO) with Gesture Control

Discover Pro touch-screen DVD nav/radio system with Gesture Control and integrated voice control. 9.2" colour touch-screen with activated voice control system - responds to voice commands for navigation, CD, DVD and radio functions. 64 GB SSD hard drive. Pre-loaded European navigation data, 3D map view, three calculated routes (fast, short, eco), dynamic navigation based on TMC, branded points of interest, traffic sign display and SD card reader x 2. Inclu...

Standard

Your

# Chosen options



## Alloy wheels, 'Tillevé'

Four 6.5J x 16 'Tillevé' with 205/55 R16 tyres and anti-theft wheel bolts

• ✓



## Urano Grey

• ✓



## Leather trimmed three-spoke multifunction steering wheel

Leather trimmed three-spoke multifunction steering wheel and gear knob

• ✓



## Black 'Zoom' cloth

Black 'Zoom' cloth

• ✓



## Discover Pro DVD nav/radio system (DNS PRO) with Gesture Control

Discover Pro touch-screen DVD nav/radio system with Gesture Control and integrated voice control. 9.2" colour touch-screen with activated voice control system - responds to voice commands for navigation, CD, DVD and radio functions. 64 GB SSD hard drive. Pre-loaded European navigation data, 3D map view, three calculated routes (fast, short, eco), dynamic navigation based on TMC, branded points of interest, traffic sign display and SD card reader x 2. Includes three years Car-Net 'Guide and Inform'.

• ✓

### Recommended packs and accessories

Curious to see packs, accessories and what's popular? See our extras available in our online configurator

- Standard
- Not available
- £ Optional
- ✓ Selected
- ♥ Liked

<http://www.volkswagen.co.uk/new/golf-vii-pa/configure/extras/3183/3184>

Your

# Chosen technologies

Here are some of the clever technologies that were selected as options in your configuration. Find out more by following the links where available.



## ♥ Discover Pro nav/radio system

1

The ultimate in media entertainment and navigation.

<https://youtu.be/HT4rShxXUwg>



## ♥ Gesture Control

1

A simple hand movement to control audio - included with Discover Navigation Pro.

[https://youtu.be/YEfa28\\_THos](https://youtu.be/YEfa28_THos)

1

**New e-Golf BEV 136ps 5 door**  
Direct Drive Blue-e-Motion



Your

# Liked options

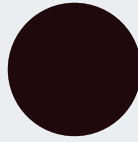
That were not added to your configuration.



♥ Atlantic Blue Metallic



£570



♥ Black Rubin



£280



♥ Deep Black Pearlescent



£570



♥ Indium Grey Metallic



£570



♥ Oryx White Special Pearlescent



£990



♥ Peacock Green Metallic



£570



♥ Pure White



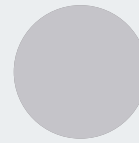
£280



♥ Tungsten Silver Metallic



£570



♥ White Silver Metallic



£570

- Standard
- Not available
- £ Optional
- ✓ Selected
- ♥ Liked



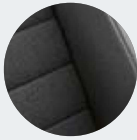
New e-Golf BEV 136ps 5 door  
Direct Drive Blue-e-Motion



Your

# Liked options (cont)

That were not added to your configuration.



♥ Black 'Vienna' leather



£2,115

Black 'Vienna' leather



♥ Pure Grey 'Vienna' leather



£2,115

Pure Grey 'Vienna' leather

- Standard
- Not available
- £ Optional
- ✓ Selected
- ♥ Liked



**New e-Golf BEV 136ps 5 door**  
Direct Drive Blue-e-Motion



Your

# Liked technologies

Here are some of the clever technologies you liked that were not added to your configuration. Find out more by following the links where available.



## ♥ Bicycle Roof Rack

Transport up to two bicycles on your roof rack. Keep your bikes safe and secure using this easy to fit bicycle carrier, made from matt chrome plated steel.

<https://youtu.be/c3ul0poHc4o>



## ♥ Dynamic Cornering lights

Our bi-xenon headlights with dynamic cornering light illuminate corners up to 90 per cent better than conventional lights.

<https://youtu.be/vlpH5QPIWRc>



## ♥ Park Assist

Your car will practically park itself, cleverly steering into the tightest of spaces at the touch of a button. All you have to do is work the pedals.

<https://youtu.be/-OL01d8pMvA>



## ♥ Rear View Camera

See behind your car with a camera in your boot.

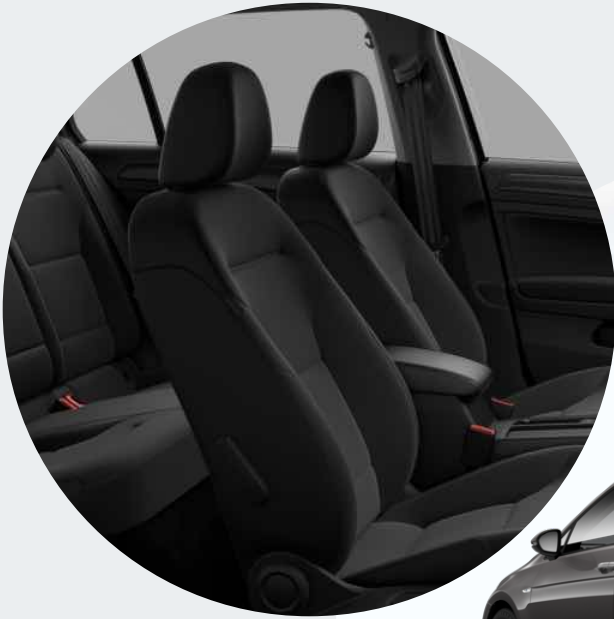
<https://youtu.be/FU3-mjiF4b0>

1

**New e-Golf BEV 136ps 5 door**  
Direct Drive Blue-e-Motion

Your

# Car reviews



## WhatCar? e-Golf

30 August 2017

You can charge it through a normal household three-pin plug, which takes 13 hours for a full charge. Alternatively, you can have a dedicated charging installed in your home, which takes only four hours; these are becoming steadily more common in public spaces such as supermarket car parks as well. If you have access to the latest quick chargers that are popping up in service stations around the

<https://www.whatcar.com/volkswagen/e-golf/hatchback/review/>

country, you can even get a full top-up in just 45 minutes while you're having a pit stop for coffee.

So if you fancy an electric car, should you go for an e-Golf, or rivals such as the BMW i3 or Nissan Leaf? Read on and we'll give you the answer.